



NEXLER Izofol

Waterproofing film in liquid form

TECHNICAL DATA

Time interval between applying individual layers	approx. 6 h
Setting time of the applied coating	up to 24 h for a layer of 1 mm
Density	1,3 g/cm ³
Initial tensile adhesion strength	≥ 0,5 N/mm ²
Watertightness	no penetration
Crack bridging ability - under standard conditions	≥ 0,75 mm
Durability of initial tensile adhesion against climate/heat ageing action - tensile adhesion strength after heat ageing	≥ 0,5 N/mm ²
Durability of initial tensile adhesion against water/humidity action - tensile adhesion strength after water contact	≥ 0,5 N/mm ²
Durability of initial tensile adhesion against contact with lime water - tensile adhesion strength after contact with lime water	≥ 0,5 N/mm ²
Durability of initial tensile adhesion against freeze and freeze-thaw cycles - tensile adhesion strength after freeze-thaw cycle	≥ 0,5 N/mm ²
Water vapour permeability	Class I
Capillary absorption and permeability to water	< 0,1 kg/m ² × h ^{0.5}
Adhesion strength by pull off test	≥ 0,8 (0,5) ^a N/mm ²
The number of layers	2 - 3
Consumption	0,8 - 1,0 kg/m ² per layer
Thickness of the bound coating	min. 1 mm
Application temperature	from +5°C to +30°C
Reference document(s)	EN 14891:2012; EN 14891:2012/AC:2012 EN 1504-2:2004

^aThe value in bracket is the lowest accepted value of any reading.

PROPERTIES

- Ready-to-use
- Microcrack-bridging
- Permanently flexible
- Eco-friendly, does not contain solvents
- For use on dry and damp substrates
- For use in rooms intended for human occupancy
- Single-component
- Provides an excellent substrate for ceramic cladding adhesives
- For application on vertical and horizontal surfaces
- Hygienically certified for indoor use



FLEXIBLE



FOR DRY AND SLIGHTLY DAMP SURFACES



SOLVENT-FREE

APPLICATION

- Making of waterproofing coatings in rooms exposed to water and moisture (e.g. bathrooms, laundry rooms, kitchens)
- Damp-proof protection on surfaces easily absorbing moisture (e.g. gypsum plasterboards)
- Waterproofing in underfloor heating systems
- For application on vertical and horizontal surfaces



FOR INDOOR USE



VERTICAL AND HORIZONTAL



ROLLER



BRUSH

PACKAGING

Poland

- Packaging: 4 kg, 7 kg, 12 kg
- Number of packages per pallet:
 - 4 kg - 144 pcs.
 - 7 kg - 80 pcs.
 - 12 kg - 60 pcs.

Export

- Packaging: 4 kg, 7 kg, 12 kg
- Number of packages per pallet:
 - 4 kg - 144 pcs.
 - 7 kg - 80 pcs.
 - 12 kg - 60 pcs.

METHOD OF USE

■ CONDITIONS OF USE

The temperature of the substrate and air during the works should be from +5°C to +30°C. Works should not be carried out during precipitation and strong sunlight.

■ SUBSTRATE PREPARATION

Izofol can be used on cement plaster, cement-lime plaster, gypsum plasterboards, gypsum fibre boards, wood-based boards, walls made of concrete, brick, gypsum blocks, cellular concrete and on properly seasoned cement, floors etc.

The substrate must be load-bearing, stable, free from any impurities, anti-adhesion agents, cement laitance, old paint coats and other impurities reducing the adhesion of the compound to substrates. New substrates must be bound and seasoned. Before applying the **Izofol** product, prime the substrates with NEXLER Gruntfol priming agent. The substrate must be rough (porous) or be trowelled with an open finish. If the concrete substrate intended for coating with **Izofol** requires reprofiling, a system of mineral mortars from the NEXLER RENOBUD R series should be used as required, according to the product application instructions.

■ PRODUCT CONTROL

Check the production date on the packaging before use. Do not use the product beyond its shelf life. The product should not be objectionable (e.g. contain lumps, fibres, discolouration) after opening. After mixing, the compound should be homogeneous and free of lumps and clumps resulting from under-mixing. Do not use a product that bears signs of freezing. When properly mixed, the product forms a homogeneous coating when spread over the surface with a tool.

■ PRODUCT PREPARATION

In order to prepare the **Izofol** liquid sealing film to be applied, after opening the packaging, mix the product in the entire capacity of the container. This activity is best performed mechanically with a slow-speed stirrer (250 - 300 rotations per minute), paying attention not to aerate the mixture.

■ APPLICATION METHOD

After the primer is applied and dried, the application of **Izofol** can be started, using a brush, a roller or a steel trowel. **Izofol** should be applied in minimum two or three working operations. In areas exposed to high levels of moisture, the product should be applied in three layers. The thickness of an individually applied layer should not exceed 0,8 mm in a wet state. The thickness of all layers applied after they are dried should be at least 1 mm. Each subsequent layer should be applied after the previous one is fully bound (at least 6 h). During the subsequent working operation, it is recommended to apply the product in a different direction from the first (e.g. vertically, when the first application was made horizontally).

The total drying time of the coating from the moment the final layer is applied is approximately 24 hours.

Depending on the type and intended operation of the facility to be protected, it is important to remember to use sealing tapes, e.g. 120/70 or 120/120, corners, expansion cords and sealing cuffs.

The material may retain a slight viscosity after bonding. As a result, the adhesive mortar has increased adhesion to the coating. Ceramic cladding can be glued directly to the fully bound waterproofing coating using adhesive mortars marked C2 S1.

The fresh **Izofol** coating, during binding, should be protected against too rapid evaporation of water, large temperature differences, contact with water or excessive moisture. Do not allow the coating and its surface to be damaged or contaminated.

The completed coating must be protected from mechanical damage caused by foot traffic, impacts, and it is therefore necessary to secure it, e.g. by laying ceramic cladding.

■ CONTROL OF PERFORMANCE

Thickness of a layer should be checked by control of material consumption per unit or dedicated surface area. The thickness of the coating can also be checked using a special measuring comb.

Particular attention should be paid to corners and areas where plumbing and other components pass through partitions – these need to be assessed for proper embedding of tapes, corners and cuffs.

The applied coating should be continuous, free from cracks or other damage.

TOOLS AND TOOL CLEANING

Low-speed mixer, brush, paint roller, steel trowel.

Wash tools with water during and after work and wipe dry. If the product dries, clean mechanically.

STORAGE AND TRANSPORT

The shelf life of the product is 12 months from production date specified on the packaging. Store in dry and cool rooms, at temperature above +5°C, in tightly sealed, original packaging. The product must be protected from heat and direct sunlight. The product is sensitive to negative temperatures.

NOTES

Works should be carried out in accordance with technical conditions, manufacturer's instructions, health and safety standards and regulations.

For information on how to deal with symptoms of disease, allergies or irritation of the skin or eyes, please refer to the Safety Data Sheet (www.nexler.com).

After works are finished, hand over the remaining content of the product and the container to authorised companies.

GENERAL RECOMMENDATIONS

Technical data and information on the method of use are given for a temperature of $23^{\circ}\text{C} \pm 2^{\circ}\text{C}$ and a relative air humidity of 55%. In other conditions, the setting (drying) time may change significantly. The consumption of the product given in this sheet depends on the preparation of the substrate.

SAFETY INFORMATION

Keep out of reach of children. Wear protective gloves/protective clothing/eye protection/face protection. Store in a well-ventilated place. Keep container tightly closed. Dispose of contents/container according to the instructions of the manufacturer or person authorized to dispose of waste. May produce an allergic reaction.

IMPORTANT INFORMATION

Please refer to the detailed conditions of use of the product before use. We guarantee the quality of our materials as part of our terms of sale and delivery.

For buildings with special requirements that are not covered by this manual, we provide our Customers with our own professional advisory service.

The manufacturer has no influence on the improper use of the material, its use for other purposes or under conditions other than those described above. The guarantee only covers the quality of the delivered product. The correct and therefore effective use of the product is not subject to our control.

Neither the manufacturer nor his authorized representative may be held liable for any loss incurred as a result of improper use or storage of the product.

Employees of the company are authorized to provide technical information only and solely in accordance with this Technical Data Sheet. Information other than that contained in this sheet should be confirmed in writing.

If you have any doubts, consult the manufacturer.

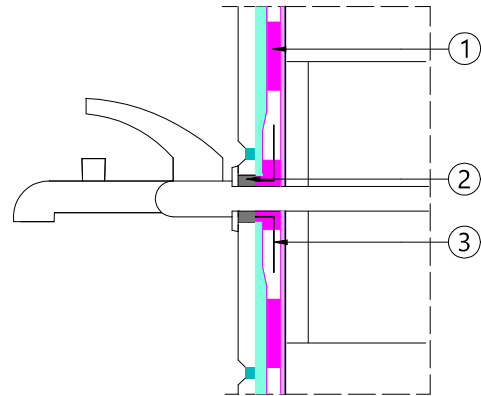
Once we have issued a new Technical Data Sheet, this manual is no longer valid.

CONTACT DETAILS

NEXLER sp. z o.o.
 Łużycka 6, 81-537 Gdynia, Poland
 tel.: +48 58 712 94 44
 www.nexler.com
 e-mail: dt@nexler.com

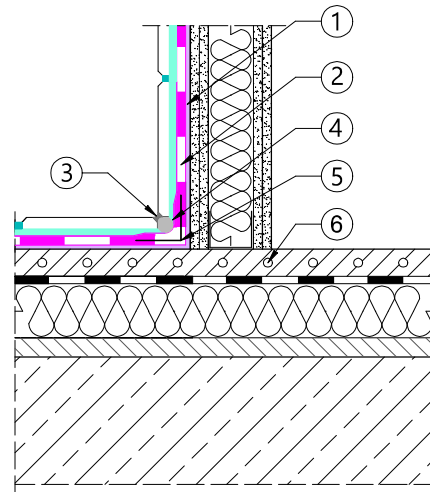
DETAILS

Detail of pipe passage through wall



1. Liquid sealing film for under tiles **NEXLER Izofol**
2. Sealant
3. Sealing Sleeve

Detail of heated floor – plasterboard connection



1. Priming layer of NEXLER Gruntfol
2. Liquid sealing film for under tiles **NEXLER Izofol**
3. Sealant
4. NEXLER Expansion Cord
5. NEXLER Sealing Tape
6. Floor heating