



NEXLER Connect Tape

Needled non-woven fabric

TECHNICAL DATA

Composition	90% polyester, 10% polypropylene
Width	100 mm or 300 mm
Total thickness	0,70 mm ± 0,1 mm
Mass per unit area	110 g/m ² ± 10 g/m ²
Mechanical properties in tension (longitudinal direction)	
- tensile strength	> 125 N / 50 mm
- elongation at break	> 50%
Mechanical properties in tension (transverse direction)	
- tensile strength	> 150 N / 50 mm
- elongation at break	> 70%
Colour	white

PROPERTIES

- High mechanical durability
- Durable reinforcement of joints between different materials
- Resistant to weather conditions
- Flexible, easy to adapt to irregular shapes and surfaces



FLEXIBLE


HIGH MECHANICAL
STRENGTH


WEATHER RESISTANT

APPLICATION

- Installing roof flashings in a system with NEXLER Connect
- Reinforcing and ensuring the continuity of waterproofing when connecting various materials including bituminous felt and coatings, metal sheets (including coated and acid-resistant sheets), concrete, hard PVC, wood-based panels
- Reinforcing flexible insulation at corners, edges, pipe penetrations etc.
- Connecting deformable and non-deformable surfaces


VERTICAL
AND HORIZONTAL

CONNECTING DIFFERENT
MATERIALS

PACKAGING

Poland

- Tape:
 - roll 10 rm / 10 cm
 - roll 20 rm / 10 cm or 30 cm

Export

- Tape:
 - roll 10 rm / 10 cm
 - roll 20 rm / 10 cm or 30 cm

METHOD OF USE

SUBSTRATE PREPARATION

Prepare the substrate as recommended in the Technical Data Sheet of NEXLER Connect.

PRODUCT CONTROL

Check the production date on the packaging before use. Do not use the product beyond its shelf life. Check that **NEXLER Connect Tape** is the same width throughout its entire length. The tape must be uniform along its entire length, without visible mechanical damage, deformation or delamination. The tape must be dry, free from grease, oil and other substances or contaminants that reduce the adhesion of the sealant.

PRODUCT PREPARATION

NEXLER Connect Tape is a ready-to-use product. Before laying the **NEXLER Connect Tape**, the depth of the joint and the section along which the joint is to be used should be measured. Cut the tape in such a way as to reduce the number of places where different fragments connect in one line.

APPLICATION METHOD

Apply NEXLER Connect evenly to the prepared substrate. **NEXLER Connect Tape** should then be embedded into the fresh compound by pressing down with a dry tool and then immediately covered with another even layer of product. In order to achieve a permanent bond, the width of the first and second layer must be greater by min. 1 cm than the width of the **NEXLER Connect Tape** reinforcing tape used. The tape must be clean, dry and properly cut. Remove any voids or blisters during the process of embedding. Adjust the amount of the compound so that the tape is fully saturated. Then, once the compound has dried, the third layer can be applied. The application area should be defined in such a way that it is at least 4 cm wider on each side than the width of the **NEXLER Connect Tape** used.

CONTROL OF PERFORMANCE

When embedding **NEXLER Connect Tape**, care must be taken to ensure that the tape adheres evenly to the substrate previously covered with a sealing material, without wrinkles, creases or visible air bubbles. The tape must be completely covered with the sealing material, with no visible uncovered areas.

TOOLS AND TOOL CLEANING

Line gauge, measuring tape, scissors, putty knife.

Clean the tools with agents intended for cleaning the sealant material.

STORAGE AND TRANSPORT

The shelf life of the product is 24 months from production date specified on the packaging. Store in dry and cool rooms. The product must be protected from direct sunlight. Do not allow the product to become wet or dirty.

NOTES

Works should be carried out in accordance with technical conditions, manufacturer's instructions, health and safety standards and regulations.

GENERAL RECOMMENDATION

The **NEXLER Connect Tape** should not be subject to prolonged sunlight exposure. UV radiation accelerates the ageing process.

IMPORTANT INFORMATION

Please refer to the detailed conditions of use of the product before use.

We guarantee the quality of our materials as part of our terms of sale and delivery.

For buildings with special requirements that are not covered by this manual, we provide our Customers with our own professional advisory service.

The manufacturer has no influence on the improper use of the material, its use for other purposes or under conditions other than those described above. The guarantee only covers the quality of the delivered product. The correct and therefore effective use of the product is not subject to our control.

Neither the manufacturer nor his authorized representative may be held liable for any loss incurred as a result of improper use or storage of the product.

Employees of the company are authorized to provide technical information only and solely in accordance with this Technical Data Sheet. Information other than that contained in this sheet should be confirmed in writing. If you have any doubts, consult the manufacturer.

CONTACT DETAILS

NEXLER sp. z o.o.

Łużycka 6, 81-537 Gdynia, Poland

tel.: +48 58 712 94 44

www.nexler.com

e-mail: dt@nexler.com

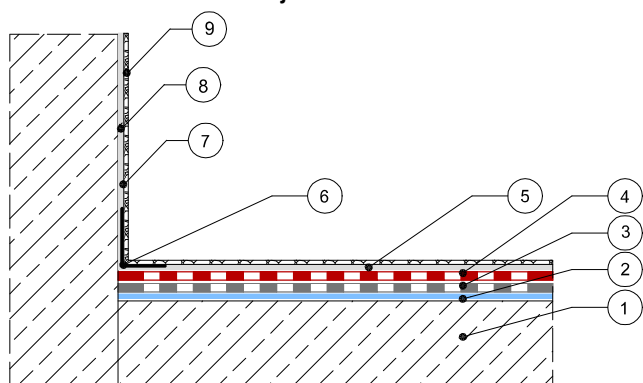
ISSUE DATE

This Technical Data Sheet was issued on 21.07.2025.

Once we have issued a new Technical Data Sheet, this one is no longer valid.

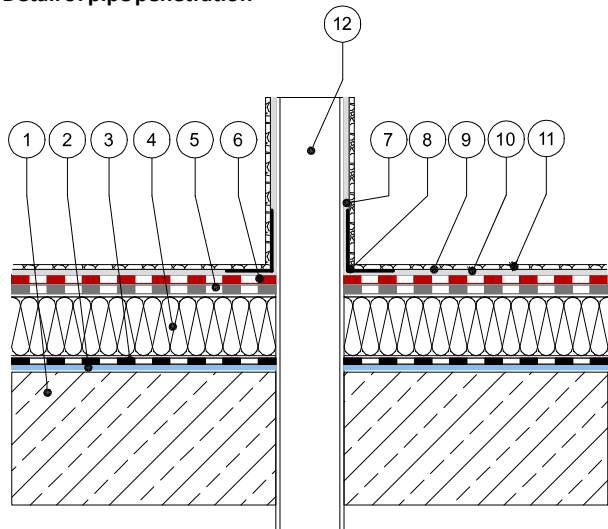
DETALE

Detail of vertical-horizontal joint



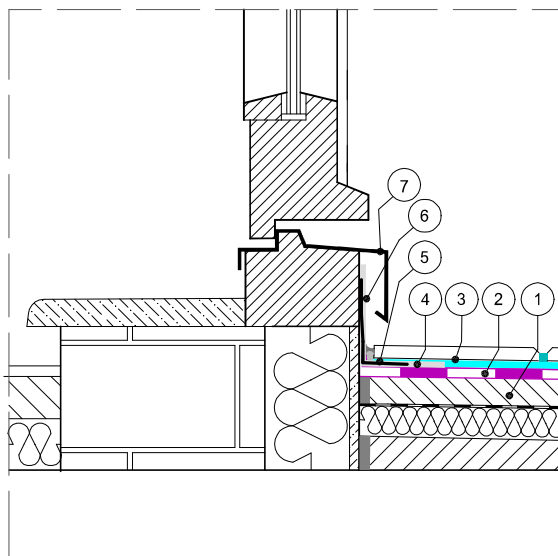
1. Concrete substrate
2. Bituminous primer NEXLER BITFLEX Primer
3. Weldable underlayer bituminous felt – to be specified
4. Weldable top layer bituminous felt – to be specified
5. I layer NEXLER Connect
6. **NEXLER Connect Tape** reinforcing non-woven fabric
7. II layer NEXLER Connect
8. III layer NEXLER Connect
9. Bituminous felt sprinkle embedded in the NEXLER Connect layer

Detail of pipe penetration



1. Concrete substrate
2. Bituminous primer NEXLER BITFLEX Primer
3. Vapour barrier made of weldable bituminous felt – to be specified
4. Thermal insulation glued on with NEXLER Styropuk Roof adhesive
5. Weldable underlayer bituminous felt – to be specified
6. Weldable top layer bituminous felt – to be specified
7. I layer NEXLER Connect
8. **NEXLER Connect Tape** reinforcing non-woven fabric
9. II layer NEXLER Connect
10. III layer NEXLER Connect
11. Bituminous felt sprinkle embedded in the NEXLER Connect layer
12. PVC pipe

Detail of sealing the terrace and balcony door joint



1. Sloping (profiling) layer – NEXLER RENOBUD R 103 / R 105
2. Mineral waterproofing NEXLER AQUAMINERAL 2K Ultra
3. Adhesive mortar C2-S1
4. I layer NEXLER Connect
5. **NEXLER Connect Tape** reinforcing non-woven fabric
6. II and III layer NEXLER Connect
7. Detail work