



# NEXLER Reno Bit

Water-based compound for roof covering restoration and maintenance

## TECHNICAL DATA

Number of layers	1 - 3
Maximum thickness of the applied layer:	
- without reinforcing non-woven fabric	< 1 mm
- with reinforcing non-woven fabric embedded	> 1 mm
Time interval between applying following layers:	
- without reinforcing non-woven fabric	3 h
- with reinforcing non-woven fabric embedded	24 h
Resistance to rain:	
- without reinforcing non-woven fabric	2 h
- with reinforcing non-woven fabric embedded	12 h
Density	1,05 g/cm <sup>3</sup>
Water content in the emulsion	no more than 50% (m/m)
Dilution capacity of the emulsion in water	no less than 300% (V/V)
Content of non-emulsified bitumen	no more than 1,2% (m/m)
Coat formation time	no later than after 6 h
Application temperature	from +5°C to +35°C
Consumption:	
- without reinforcing non-woven fabric	approx. 0,4 kg/m <sup>2</sup> per layer
- with reinforcing non-woven fabric embedded	approx. 2,5 kg/m <sup>2</sup>
Reference document(s)	PN-B-24002:1997; PN-B-24002:1997/Ap1:2001

## PROPERTIES

- Quick-drying – resistance to rain as soon as after 2 h
- Increased resistance to UV radiation
- High flexibility even at negative temperatures
- Sealing of micro-cracks in the substrate
- No solvents or toxic substances
- Safe in contact with polystyrene foam
- Very good adhesion to the substrate
- Efficient
- Extends the life of the roof
- Ready-to-use



QUICK-DRYING



EXTENDS THE LIFE OF THE ROOF



INCREASED RESISTANCE TO UV RADIATION

## APPLICATION

- Restoration and maintenance of roof coverings i.a. made of bituminous felt, shingles, bituminous coatings
- Execution of seamless, renovation roof coverings reinforced with non-woven fabric
- Damp-proof insulation of underground elements of buildings and structures
- Also for use on solvent-based bitumen coatings (after evaporation of the solvent)



FOR ROOFS



ROLLER



ROOFING BRUSH



SPRAYING

## PACKAGING

### Poland

- Packaging: 10 kg, 20 kg
- Quantity per pallet:
  - 10 kg - 60 pcs.
  - 20 kg - 33 pcs.

### Export

- Packaging: 10 kg, 20 kg
- Quantity per pallet:
  - 10 kg - 55 pcs.
  - 20 kg - 33 pcs.

## METHOD OF APPLICATION

### CONDITIONS OF USE

The temperature of the substrate and air during the works should be from +5°C to +35°C.

Works should not be carried out during precipitation and strong sunlight.

### SUBSTRATE PREPARATION

**Renovation and maintenance of a roof:** The roof surface must be clean, dry, unfrozen, stable. It must have specific gradients to ensure water run-off. Clean the existing bituminous substrates from loose impurities and peeling coatings. Ruptures, cavities in the bituminous felt, areas of leakage should be levelled or sealed. Blisters on the felt should be cut and glued using a roofing putty. Repair any flashings. Examine and repair the fixing of other elements on the surface. Fix and repair elements of surface drainage. When restoring, the substrate should be primed with NEXLER BITFLEX Primer.

**Waterproofing:** The substrate intended for product application must be bonded, dry or dull-moist, seasoned and load-bearing. The substrate should be cleaned mechanically, dust, any loose layers, sharp protruding edges and impurities that worsen adhesion should be removed. If there are cavities in the substrate, honeycombing, gravel pockets and other unevenness, the substrate should be levelled and repaired, the cavities should be filled.

Partitions made of small size elements should have an equal face, a full joint. The substrate on which the product will be used must be continuous. Prime the prepared substrate with NEXLER BITFLEX Primer.

### PRODUCT CONTROL

Check the production date on the packaging before use. The product should not be incorporated beyond its shelf life. The product should not be objectionable (e.g. lumps, fibres, discolouration) after opening. After mixing, the compound should be homogeneous and free of lumps and clumps resulting from under-mixing. Do not use a product that bears signs of frostbite. The correct consistency of the product is not dry or rubbery. When properly mixed, the product forms a homogeneous coating when spread over the surface with a tool.

### PRODUCT PREPARATION

**NEXLER Reno Bit** is a ready-to-use product. Before use, mix the product until a homogeneous mass is obtained.

### APPLICATION

**Maintenance of bituminous felt coverings:** After preparing the substrate, apply **NEXLER Reno Bit** in a single layer using a roller, paint brush or suitable spraying equipment. In areas particularly exposed to sunlight, the coating can be protected with the NEXLER Silver Protect asphalt-aluminium compound.

**Restoration of bituminous felt coverings:** After preparing the substrate, apply **NEXLER Reno Bit** in at least two layers depending on the condition of the substrate. Apply the compound using a roller, paint brush or suitable spraying equipment. Apply each layer after the previous one has dried. At the points of contact between the roof panel and the chimneys, firewalls or similar areas, reinforce the coating by embedding strips of polypropylene nonwoven fabric in the compound.

In areas particularly exposed to sunlight, the coating can be protected with NEXLER Bituminous Felt Sprinkle or NEXLER Silver Protect asphalt-aluminium compound. Apply the felt topping to the last, fresh layer of compound. The above products should be applied over the dried **NEXLER Reno Bit** coating.

**Execution of seamless coverings on old roofing:** Apply the **NEXLER Reno Bit** compound with a wide paint brush or roofing brush, in sufficient quantity to fully saturate the NEXLER NexGreen Geo 110 reinforcement non-woven fabric. Spread the product evenly in strips slightly wider than the width of the non-woven. Embed NEXLER NexGreen Geo 110 non-woven fabric into the fresh layer of compound, pressing it thoroughly into the substrate with a pressure roller. Then cover it with a thin, even layer of **NEXLER Reno Bit**. When laying successive non-woven strips, maintain an overlap width of at least 15 cm. The longitudinal and transverse overlaps of the non-woven must be shifted in relation to the overlaps of the bituminous felt covering by about half the width to avoid aligning them.

After the coating has dried, no sooner than the next day, cover it with another layer of **NEXLER Reno Bit**. To increase the durability of the coating, a bituminous felt sprinkle can be applied to the last, fresh layer.

**Waterproofing: NEXLER Reno Bit** is recommended to be applied in at least two working applications. The next layer can be applied after the previous one has fully dried. Apply the material by hand, using a brush, roofing brush or suitable spraying equipment. After complete binding, the waterproof coating should be protected against mechanical damage associated with backfilling the excavation.

During binding, the freshly applied layer should be protected against precipitation.

### CONTROL OF PERFORMANCE

When fresh, check the consumption of the material per unit and/or dedicated area on an ongoing basis. After the materials has dried, a properly made waterproofing should be a uniform, clean coating, without flaking and other defects, the coating should adhere closely to the substrate. The **NEXLER Reno Bit** product is characterised by its brown colour, which turns black as it sets.

When making seamless roof coverings, care must be taken to ensure that the non-woven fabric adheres evenly to the substrate, with no visible wrinkles or creases. Check that successive layers have not shifted and check overlap widths.

## TOOLS AND TOOL CLEANING

Low-speed stirrer, roller, roofing brush, paint brush.

Use a pump for spray application, e.g. WAGNER HC 970 (nozzle 531, pressure 100 bar).

Wash tools with water during work and after their completion, and wipe dry.

If the product dries, clean with organic solvents or mechanically. Clean the spray equipment immediately after work, according to the equipment manufacturer's recommendations.

## STORAGE AND TRANSPORT

The shelf life of the product is 18 months from production date specified on the packaging. Store in dry and cool rooms at temperature above +5°C, in tightly sealed, original packaging. The product must be protected from heat and direct sunlight.

## NOTES

Works should be carried out in accordance with technical conditions, manufacturer's instructions, health and safety standards and regulations. For information on how to deal with symptoms of disease, allergies or irritation of the skin or eyes, please refer to the Safety Data Sheet ([www.nexler.com](http://www.nexler.com)).

After work the remaining content of the product and container should be handed over to authorized companies.

## GENERAL RECOMMENDATIONS

Technical data and information on the method of use are given for a temperature of 23°C ± 2°C and a relative air humidity of 55%. In other conditions, the setting (drying) time may change significantly.

The product consumption indicated in this sheet depends on the type, preparation and absorption capacity of the substrate. When using felt topping, a thicker layer of compound is recommended for better embedding of the aggregate. Drying time is influenced by the type and fraction of the felt topping.

Do not use for tar materials.

Do not use on structure elements exposed to negative water pressure, as this may lead to detachment of the insulation layer or formation of blisters on it.

Do not use the product inside rooms intended for the food industry and for permanent human occupancy.

Dimpled foils should not be used to protect bituminous mass due to the fact that dimples, under soil pressure, may locally press on the coating and damage it. The exception being profiled films with an integrated filtering non-woven fabric.

## SAFETY INFORMATION

May cause an allergic skin reaction. If medical advice is needed, have product container or label at hand. Keep out of reach of children. Wash hands and exposed parts of the body thoroughly after handling. Wear protective gloves/protective clothing/eye protection/face protection. Dispose of contents/container according to the instructions of the manufacturer or person authorized to dispose of waste.

## IMPORTANT INFORMATION

Please refer to the detailed conditions of use of the product before use.

We guarantee the quality of our materials as part of our terms of sale and delivery. For buildings with special requirements that are not covered by this manual, we provide our Customers with our own professional advisory service.

The manufacturer has no influence on the improper use of the material, its use for other purposes or under conditions other than those described above. The guarantee only covers the quality of the delivered product. The correct and therefore effective use of the product is not subject to our control.

Neither the manufacturer nor his authorized representative may be held liable for any loss incurred as a result of improper use or storage of the product.

Employees of the company are authorized to provide technical information only and solely in accordance with this Technical Data Sheet. Information other than that contained in this sheet should be confirmed in writing.

If you have any doubts, consult the manufacturer.

## CONTACT DETAILS

NEXLER sp. z o.o.

Łużycka 6, 81-537 Gdynia, Poland

tel.: +48 58 712 94 44

[www.nexler.com](http://www.nexler.com)

e-mail: [dt@nexler.com](mailto:dt@nexler.com)

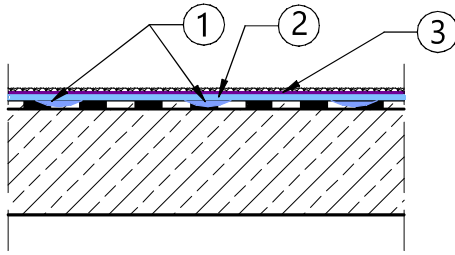
## ISSUE DATE

This Technical Data Sheet was issued on 22.05.2025.

Once we have issued a new Technical Data Sheet, this one is no longer valid.

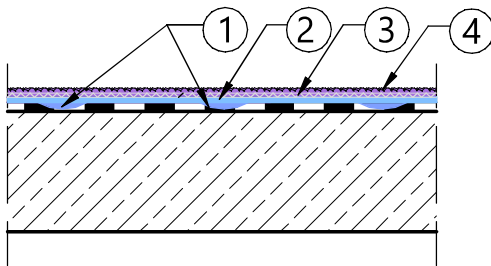
## DETAILS

### Restoration of a flat roof



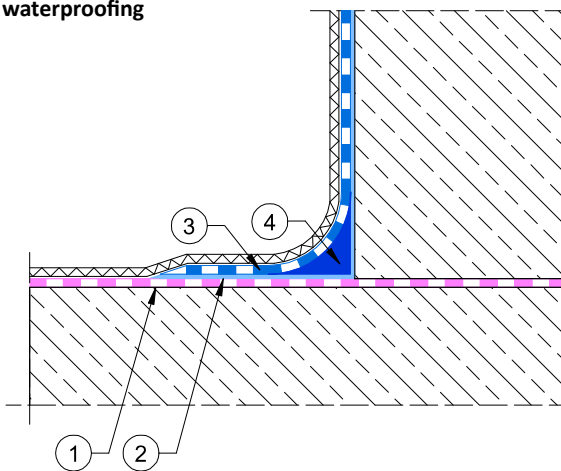
1. Filling of cavities in the old bituminous felt covering  
NEXLER Arbolex Aqua Stop
2. Priming layer NEXLER BITFLEX Primer
3. Restoration layers with felt topping **NEXLER Reno Bit**

### Restoration of a flat roof - seamless covering reinforced with non-woven fabric



1. Filling of cavities in the old bituminous felt covering  
NEXLER Arbolex Aqua Stop
2. Priming layer NEXLER BITFLEX Primer
3. First layer of **NEXLER Reno Bit** with embedded NEXLER  
NexGreen Geo 110 nonwoven fabric
4. Second layer of **NEXLER Reno Bit** with bituminous felt sprinkle

### Detail of footing and foundation wall connection – damp-proof waterproofing



1. Horizontal insulation e.g. NEXLER AQUAMINERAL 1K Ultra
2. Priming layer NEXLER BITFLEX Primer
3. Damp-proof insulation **NEXLER Reno Bit**
4. Facet made of NEXLER BITFLEX 1KP compound with a radius of 2 cm