



# NEXLER Parking+

## Heat-weldable bituminous felt

### TECHNICAL DATA

Type of reinforcement	non-woven polyester
Top finishing	coarse grained
Low temperature flexibility	$\leq -20^{\circ}\text{C}$
Width	$\geq 0,99 \text{ m}$
Thickness	$(5,5 \pm 0,5) \text{ mm}$
Reaction to fire	class E
Watertightness: waterproof at a pressure	10 kPa (method A)
Watertightness: water absorption	$\leq 0,3\%$
Maximum tensile force:	
- longitudinal elongation	$1250 \pm 150 \text{ N/50 mm}$ $(55 \pm 15) \%$
- transversal elongation	$950 \pm 150 \text{ N/50 mm}$ $(60 \pm 15) \%$
Resistance to root penetration	NPD
Resistance to static loading	$\geq 20 \text{ kg}$ (method B)
Resistance to impact	$\geq 1750 \text{ mm}$ (method A)
Adhesion	$\geq 0,5 \text{ N/mm}^2$
Resistance to shear	$\geq 0,2 \text{ N/mm}^2$
Compatibility - in thermal tests	$\geq 100\%$
Capacity to bridge cracks:	
- ability to protect cracks in the substrate	Type 3
- requirements met at temp.	$\leq -10^{\circ}\text{C}$
Resistance to heat impact	$\leq 0,8 \text{ mm}$
Resistance to perforation (compaction)	Requirements met (method 2)
Durability:	
- water absorption	$\leq 0,3\%$
- thermal ageing behavior as follows:	
flexibility at low temperature	$\leq -10^{\circ}\text{C}$
flow resistance at elevated temperature	$(100 \pm 10)^{\circ}\text{C}$
- compatibility by heat conditioning	$\geq 100\%$
Performance while cold-bending	$\leq -20^{\circ}\text{C}$
Durability: flow resistance at elevated temperature	$(100 \pm 10)^{\circ}\text{C}$
Dimensional stability	$\leq 0,5\%$
Reference document(s)	EN 14695:2010; EN 13707:2004+A2:2009

### PROPERTIES

- Double SBS modification
- Durable and puncture-resistant
- For use in reduced ambient temperatures
- Flexible in a wide temperature range
- Fixed by welding
- Approved for use under heavy surface protection


12-YEARS  
WARRANTY


2xSBS



HIGH DURABILITY



WELDING

### APPLICATION

- Single-layer waterproofing of concrete surfaces intended for vehicle traffic such as parking lots, garages etc.
- For roofs, terraces and balconies as waterproofing


FOR ROOFS,  
TERRACES AND  
BALCONIES


FOR PARKING LOTS

### PACKAGING

#### Poland

- Roll length: 10 m
- Quantity on pallet:  
12 rolls (120 m<sup>2</sup>)

#### Export

- Roll length: 10 m
- Quantity on pallet:  
12 rolls (120 m<sup>2</sup>)

## METHODS OF USE

### ▪ CONDITIONS OF USE

Making an insulation using **NEXLER Parking+** bituminous felt should be carried out according to the technical design, in accordance with the current building regulations and the detailed guidelines for the design and execution of insulation contained in NEXLER Insulation Systems and the Technical Data Sheet.

The bituminous felt should be installed in ambient temperatures of above +5°C, this requirement applies to the time of day and night.

Do not carry out insulation work during strong winds and precipitation.

### ▪ SUBSTRATE PREPARATION

The quality assessment criteria for cement concrete substrates on which insulation may be installed are as follows:

- strong substrate (substrate strength tested using the "pull-off" method is at least 1,0 MPa),
- dry substrate (concrete is in air-dry condition, without visible traces of moisture and darkening caused by moisture); if the NEXLER EPOLIS EP 601 resin primer is used, insulation may also be installed on matt damp substrates, the concrete surface should be uniformly dark and matt, without light spots and water puddles,
- clean substrate (concrete surface is free from loose fractions, dust, oil stains, grease and other contaminants),
- smooth substrate (local unevenness and cavities on the concrete surface do not exceed  $\pm 5$  mm),
- even substrate (the gaps between the surface of the substrate and a 4 m long patch placed on the concrete substrate do not exceed 10 mm).

Before welding the **NEXLER Parking+** bituminous felt, the substrate must be primed.

### ▪ PRODUCT CONTROL

The product should not raise any objections. The roll should be evenly rolled, without kinks.

### ▪ PRODUCT PREPARATION

If it is necessary to make the covering at low ambient temperatures, it is recommended to store the rolls in heated rooms at a temperature of not less than +18°C for 24 hours before installation.

### ▪ APPLICATION METHOD

**NEXLER Parking+** bituminous felt should be fixed by welding to a concrete substrate primed with an asphalt priming agent NEXLER Penetrator G7 or NEXLER BITFLEX Primer or a resin priming agent, e.g. NEXLER EPOLIS EP 601. A substrate primed with a resin primer should not be re-primed with a bituminous primer and vice versa, a substrate primed with a bituminous primer should not be re-primed with a resin primer. The consumption of the primers is from 0,2 kg/m<sup>2</sup> to 0,3 kg/m<sup>2</sup>.

Welding of the bituminous felt sheets should be carried out after the priming agent has completely dried (or cured).

As a result of heating both the substrate and the underside of the bituminous felt with a burner, the thin protective plastic foil melts, the asphalt is slightly melted and the bituminous felt sticks evenly to the substrate. The insulation of engineering structures particularly requires 100% bonding of the bituminous felt underside with the primed substrate. Maintain a bituminous felt overlap min. 8 cm wide along the length of the felt strip and an overlap min. 15 cm wide at the joint perpendicular to the length of the felt strip. Overlaps of the bituminous felt at joints perpendicular to the length of the bituminous felt on adjacent sheets should be offset from each other by at least 50 cm.

### ▪ CONTROL OF PERFORMANCE

During acceptance, the following should be checked:

- correctness of welding of overlaps – a continuous trickle of melted asphalt mixture on the overlaps is required,
- adhesion of the bituminous felt to the substrate.

## WARRANTY

The manufacturer NEXLER sp. z o.o. provides the direct purchaser of **NEXLER Parking+** bituminous felt:

- a standard material warranty of 12 years.

Details of the guarantee provided to the purchaser are contained in the guarantee card. Exercising the rights under this warranty is subject to using the bituminous felt in compliance with the applicable construction regulations, the Technical Data Sheet, and as per the intended use of the product as specified in the project and the PN-EN 14695 or PN-EN 13707 standards.

## TOOLS AND TOOL CLEANING

Roofing gas burner, bituminous felt uncoiler.

## STORAGE AND TRANSPORT

The rolls of **NEXLER Parking+** bituminous felt are protected with packing tapes before unrolling. Each roll has a label with the required data on it. The rolls are placed vertically on wooden industrial pallets and foiled.

During transportation and storage, the rolls must be protected from moisture and exposure to sunlight, and be placed upright in one layer in a way preventing any dislocation or damage.

The bituminous felt rolls must be stored on a flat surface at a distance of at least 120 cm from radiators.

Transportation must be carried out in compliance with applicable shipment safety regulations.

## NOTES

Works should be carried out in accordance with technical conditions, manufacturer's instructions, health and safety standards and regulations.

Before welding the bituminous felt, take notice of whether the next roll to be rolled out does not differ in the shade of the sprinkle. The sprinkle is a natural raw material and may vary in shade.

In the case of garage slabs without a bituminous top layer, separation and slip layers of sufficient thickness should be designed. Minimum slope gradient of 1%.

## IMPORTANT INFORMATION

Please refer to the detailed conditions of use of the product before use.

We guarantee the quality of our materials as part of our terms of sale and delivery.

For buildings with special requirements that are not covered by this manual, we provide our Customers with our own professional advisory service.

The manufacturer has no influence on the improper use of the material, its use for other purposes or under conditions other than those described above. The guarantee only covers the quality of the delivered product. The correct and therefore effective use of the product is not subject to our control.

Neither the manufacturer nor his authorized representative may be held liable for any loss incurred as a result of improper use or storage of the product.

Employees of the company are authorized to provide technical information only and solely in accordance with this Technical Data Sheet. Information other than that contained in this sheet should be confirmed in writing.

If you have any doubts, consult the manufacturer.

## CONTACT DETAILS

NEXLER sp. z o.o.

Łużycka 6, 81-537 Gdynia, Poland

tel.: +48 58 712 94 44

www.nexler.com

e-mail: dt@nexler.com

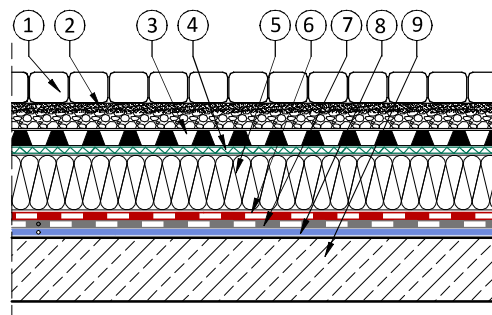
## ISSUE DATE

This Technical Data Sheet was issued on 13.03.2025.

Once we have issued a new Technical Data Sheet, this one is no longer valid.

## DETAILS

### Roof for under pavements intended for traffic



1. Paving block surface
2. Pavement subbase
3. Protective and drainage membrane integrated with geotextile NEXLER NexGreen Duo 10/400
4. Separation and diffusion geotextile NEXLER NexGreen Geo 110
5. Thermal insulation - XPS boards
6. Weldable underlayer bituminous felt **NEXLER Parking+**
7. Weldable underlayer bituminous felt NEXLER PREMIUM PYE PV200 S30 FF
8. Grunt bitumiczny Bituminous primer NEXLER BITFLEX Primer or NEXLER Penetrator G7
9. Concrete substrate constructed with a slope of min. 2%