



NEXLER BITFLEX Primer

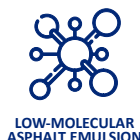
Quick-drying bituminous and anionic primer (concentrate)

TECHNICAL DATA

Ingredients	water-based emulsion of asphalts, rubbers and refining additives
Water content in the emulsion	no more than 50% (m/m)
Time interval between applying successive layers	approx. 2 h
Dilution capacity of the emulsion in water	no less than 300% (V/V)
Content of non-emulsified bitumen	no more than 1,2% (m/m)
Flowability of the coating from the roofing felt in the vertical position at the temperature 75 °C for 5 h	does not flow
Permeability of the coating at 500 mm water column in 24 h	unacceptable
Consumption: - priming - damp proof insulation (applies to the finished coating)	approx. 0,2 kg/m ² approx. 0,5 kg/m ²
Reference document(s)	PN-B-24002:1997; PN-B-24002:1997/Ap1:2001

PROPERTIES

- Quick and easy in application
- Increases the adhesion of the insulation to the substrate
- Fast-drying, allows for welding the roofing felt even after 30 min
- Perfect adhesion to proper prepared mineral surfaces
- Can be used on dry and semi-dry substrate
- Solvent-free, environmentally friendly
- Odorless
- Safe for use in contact with polystyrene
- Based on the innovative technology of low-molecular asphalt emulsion



APPLICATION

- Priming of mineral substrates for insulation made of bituminous masses, weldable and self-adhesive membranes
- Priming substrates with reduced water absorption, the so-called "waterproof concretes"
- Priming floors on the ground in basements and garages, prior to making proper insulation
- Priming OSB panels
- To protect wooden elements sunk into the ground
- Damp-proof insulation of underground elements of buildings and structures



PACKAGING

Poland

- Packaging: 8 kg, 22 kg
- Quantity per pallet:
- 8 kg - 80 pcs.
- 22 kg - 24 pcs.

Export

- Packaging: 8 kg, 22 kg
- Quantity per pallet:
- 8 kg - 80 pcs.
- 22 kg - 24 pcs.

METHOD OF APPLICATION

CONDITIONS OF USE

The temperature of the substrate and air during the works should be from +5°C to +30°C. Works should not be carried out during precipitation and strong sunlight. The product should be used in airy places, away from fire.

SUBSTRATE PREPARATION

The substrate intended for priming should be bound, seasoned, load-bearing. The substrates should be cleaned mechanically, dust, any loose layers, sharp protruding edges and impurities that worsen adhesion should be removed. If there are cavities in the substrate, honeycombing, gravel pockets and other unevenness, the substrate should be levelled and repaired, the cavities should be filled. Partitions made of small size elements should have an equal face, a full joint. The substrate on which the product will be used must be continuous.

PRODUCT CONTROL

Check the production date on the label before use. Do not use the product beyond its shelf life. The product should not be objectionable (e.g. contain lumps, fibres, discolouration) after opening. After mixing, the product should be homogeneous and free of lumps and clumps. Do not use a product that bears signs of freezing. The correct consistency of the product is not dry or rubbery. When properly mixed and applied, the product does not form a layer on the surface, but penetrates into the substrate.

PRODUCT PREPARATION

Substrate priming: Before use, **BITFLEX Primer** should be diluted with water in proportions depending on the type of substrate.

- Priming of a substrate with regular water absorption:
1 : 1 (water : **BITFLEX Primer**).
- Priming of a substrate with reduced water absorption:
2 : 1 (water : **BITFLEX Primer**).
- For self-adhesive felt, it is recommended to prime the substrate with **BITFLEX Primer** diluted with water in a ratio of 1 : 2 (water : **BITFLEX Primer**).

The product should be thoroughly mixed with water.

Damp-proof coatings: Stir thoroughly before use, and repeat mixing from time to time during application.

APPLICATION METHOD

Substrate priming: **BITFLEX Primer**, diluted with water, should be applied with of a brush or a roofing brush to a properly prepared surface.

Damp-proof coatings: It is recommended to apply the **BITFLEX Primer** to the primed surface in three working applications. The successive layer can be applied after the previous one has fully dried. Material should be applied by hand, using a brush or a roofing brush.

During binding, the freshly applied layer should be protected against: precipitation and strong sunlight. After complete bonding, the waterproof coating should be protected with PE film, EPDM or non-woven against mechanical damage associated with backfilling the excavation. Dimpled foils should not be used to protect bituminous mass due to the fact that dimples, under soil pressure, may locally press on the coating and damage it. The exception being profiled films with an integrated filtering non-woven fabric.

It is permissible to apply the product with a spraying device, e.g. WAGNER HC970.

NOZZLE	PRESSURE
WAGNER 311 or 413	100 bar
WAGNER 511 or 513*	120 bar

*WAGNER nozzles 511 and 513 are recommended for large areas > 1000 m²

CONTROL OF PERFORMANCE

When fresh, check the consumption of the material per unit and/or dedicated area on an ongoing basis.

A properly primed surface, after the solution has dried, should have a uniform colour, without streaks and discoloration. The resulting coating should be free of flakes and damage.

Properly made damp-proof insulation, after drying, should be a uniform, clean coating, without blisters, flakes and other defects, the coating should adhere closely to the primed substrate.

TOOLS AND TOOL CLEANING

Roofing brush, brush or spraying equipment.

Wash tools with water during work and wipe dry, after work wash them with water and leave to dry. In case the product dries on the tool, clean with petrol solvents. Clean the spray equipment immediately after work, according to the equipment manufacturer's recommendations.

STORAGE AND TRANSPORT

The shelf life of the product is 12 months from production date specified on the packaging. Store in dry and cool rooms at temperature above +5°C in tightly sealed, original packaging.

NOTES

Works should be carried out in accordance with technical conditions, manufacturer's instructions, health and safety standards and regulations.

For information on how to deal with symptoms of disease, allergies or irritation of the skin or eyes, please refer to the Safety Data Sheet (www.nexler.com).

After completing the work, the remaining content of the product and container should be handed over to authorized companies.

GENERAL RECOMMENDATIONS

Technical data and information on the method of use are given for a temperature of $23^{\circ}\text{C} \pm 2^{\circ}\text{C}$ and a relative air humidity of 55%. In other conditions, the setting (drying) time may change significantly.

The consumption of the product given in this sheet depends on the preparation of the substrate.

Do not use the product for tar materials.

SAFETY INFORMATION

May cause an allergic skin reaction. If medical advice is needed, have product container or label at hand. Keep out of reach of children. Wash hands and exposed parts of the body thoroughly after handling. Wear protective gloves/protective clothing/eye protection/face protection. Dispose of contents/container to according to the instructions of the manufacturer or person authorized to dispose of waste.

IMPORTANT INFORMATION

Please refer to the detailed conditions of use of the product before use.

We guarantee the quality of our materials as part of our terms of sale and delivery. For buildings with special requirements that are not covered by this manual, we provide our Customers with our own professional advisory service.

The manufacturer has no influence on the improper use of the material, its use for other purposes or under conditions other than those described above. The guarantee only covers the quality of the delivered product. The correct and therefore effective use of the product is not subject to our control.

Neither the manufacturer nor his authorized representative may be held liable for any loss incurred as a result of improper use or storage of the product.

Employees of the company are authorized to provide technical information only and solely in accordance with this technical data sheet. Information other than that contained in this sheet should be confirmed in writing.

If you have any doubts, consult the manufacturer. Once we have issued a new technical data sheet, this manual is no longer valid.

CONTACT DETAILS

NEXLER sp. z o.o.

Łużycka 6, 81-537 Gdynia, Poland

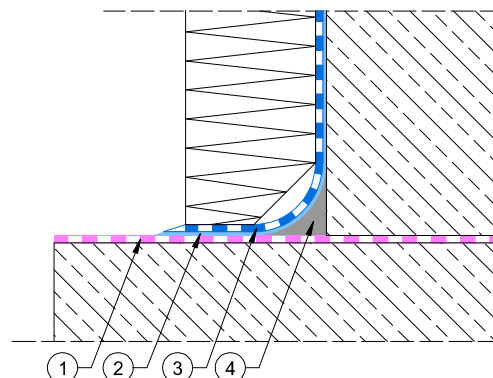
tel.: +48 58 712 94 44

www.nexler.com

e-mail: dt@nexler.com

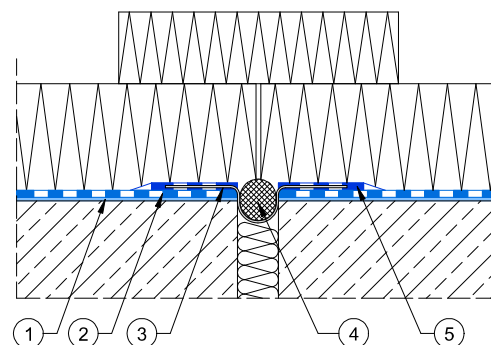
DETAILS

Detail of a footing and foundation wall connection-damp-proof waterproofing



1. Horizontal insulation, e.g. NEXLER AQUAMINERAL 1K Ultra
2. Priming layer of **BITFLEX Primer**
3. **BITFLEX Primer** damp-proof insulation
4. A facet made of NEXLER RENOBUD R 103 mortar with a radius of 5 cm or made of NEXLER BITFLEX 1KP mass with a radius of 2 cm

Detail of an expansion joint



1. Priming layer of **BITFLEX Primer**
2. **BITFLEX Primer** damp-proof insulation
3. NEXLER Sealing Tape
4. NEXLER Backer Rod
5. NEXLER BITFLEX 1KP sealing mass