



NEXLER Connect

One-component polyurethane-bitumen resin

TECHNICAL DATA

Composition	polyurethane-bitumen resin
Density	1,25 g/cm ³
Setting time	approx. 2,5 h
Pensky-Martens flash point	no less than 31 - 40°C
Water content	no more than 0,5% (m/m)
Mechanical properties in tension:	
- tensile strength	> 1,8 MPa
- elongation at break	> 400%
Flexibility at a low temperature	-30°C
Resistance to rain	after 30 mins
Temperature resistance after curing	from -40°C to +120°C
Consumption:	
- I layer	600 g/m ²
- II layer	800 g/m ²
- III layer	700 g/m ²
Application temperature	from 0°C to +35°C
Reference document(s)	PN-B-24620:1998; PN-B-24620:1998/Az1:2004

PROPERTIES

- Does not require priming
- Can be applied to matt-damp substrates
- Very good adhesion to various substrates
- High flexibility even at negative temperatures
- High resistance to UV radiation
- Safe for use in contact with polystyrene
- Quick and easy to use
- Watertight
- Fills cracks and crevices
- Resistant to weather conditions
- Resistant to low and high temperatures



HIGH RESISTANCE TO
UV RADIATION



VERY GOOD
ADHESION



HIGH FLEXIBILITY

APPLICATION

- Bonding of different surfaces to achieve waterproofing continuity, e.g. bituminous felt and coatings, sheet metal (including coated and acid-resistant sheets), concrete, hard PVC, EPDM membranes, wood-based panels.
- Construction and sealing of roof details
- Sealing of roof details, internal gutters, troughs, walls, skylights, etc.
- Repair of various types of roof coverings
- Sealing penetrations in foundation waterproofing
- Sealing of joints between balcony and terrace slabs and walls



ON THE FOUNDATIONS, VERTICAL AND HORIZONTAL
ROOFS AND TERRACES



PACKAGING

Poland

- Packaging: 1,2 kg, 5 kg
- Quantity per pallet:
 - 1,2 kg - 385 pcs.
 - 5 kg - 120 pcs.

Export

- Packaging: 1,2 kg, 5 kg
- Quantity per pallet:
 - 1,2 kg - 385 pcs.
 - 5 kg - 120 pcs.

METHOD OF USE

■ CONDITIONS OF USE

The temperature of the substrate and air during the works should be from 0°C to +35°C. At lower temperatures, a delay in setting is to be expected, as well as a change in the consistency of the material and as a result of that an increase in consumption. The temperature of the substrate must always be at least 3°C above the dew point temperature until the material is fully cured.

Works should not be carried out during precipitation and strong sunlight. Once a film is formed on top, the product is resistant to moderate rain. The product must not be exposed to water during setting, including water penetrating from the substrate.

■ SUBSTRATE PREPARATION

Substrates on which **NEXLER Connect** can be applied include i.a. bituminous felt and coatings, sheet metals (including coated and acid-resistant sheets), concrete, hard PVC, EPDM membranes, wood-based panels.

The substrate must be dry or matt-damp, unfrozen, stable and clean and free from oil, grease, cement laitance, paint coatings, release agents and other substances that impair adhesion. Clean substrates of loose dirt and flaking coatings. When applying the product on dry, hot days, slightly moisten the absorbent substrate. The product does not require priming of the substrate.

Bitumen membranes finished with sprinkles: Clean existing bituminous substrates of loose dirt and other debris. Verify that the membrane is correctly fixed to the substrate.

Sheet metal: Remove rust and any adhesion-impairing coatings from sheet metal and flashings. If necessary, protect against corrosion. It is recommended to roughen the surface with a grinder disc with the exception of coated sheets, e.g. galvanised. Degrease the surface with a solvent, e.g. acetone.

Concrete: The substrate intended for product application must be set, even, dry or matt-damp, unfrozen, seasoned and load-bearing. Any sharp edges should be deburred or chamfered. The substrate should be cleaned mechanically, dust, any loose layers and impurities that worsen adhesion should be removed. If there are cavities in the substrate, honeycombing, gravel pockets and other unevenness, the substrate should be levelled and the cavities should be filled. In the case of a very smooth surface, e.g. prefabricated elements, the surface should be grinded in order to remove cement laitance and open up the pores. After grinding, the surface should be dusted off.

PVC: Roughen and degrease elements made of hard PVC, e.g. pipes, window profiles, with an agent approved by the PVC manufacturer. Ensure that any protective tape at the sealing area has been removed.

Wood-based panels: The surface needs to be grinded and any cavities (joints, knot holes) filled.

EPDM membrane: Clean and degrease elements made of EPDM membrane with an agent approved by the EPDM membrane manufacturer.

■ PRODUCT CONTROL

Check the production date on the packaging before use. Do not use the product beyond its shelf life. The product should not be objectionable, e.g. contain lumps, fibres, discolouration, after opening. The product must not be set. Scum may form on the surface, which is not a defect in the product. The product forms a homogeneous coating when spread over a surface with a tool.

■ PRODUCT PREPARATION

NEXLER Connect is a ready-to-use product. If stored at low temperatures, the product should be placed in a warm room for a minimum of 24 hours before use. Avoid rapid and intensive mixing to prevent aeration and moisture from entering the product. Moisture affects the curing process and can cause the product to bind inside the packaging. If a scum appears, remove it from the surface. When mixing, use a slow-speed stirrer or do it manually, paying attention not to aerate the mixture. Make sure that tools and containers are dry before they come into contact with the product. For partial use, transfer a portion of the material into a clean container. Before using and pouring **NEXLER Connect**, it is recommended to secure the edge of the packaging with plastic tape. This will enable the packaging to be closed and opened repeatedly and prevent the edges of the bucket from becoming dirty. Before closing the packaging, remove the tape, secure the product surface with film and then close the packaging tightly.

■ APPLICATION METHOD

Apply **NEXLER Connect** evenly to the prepared substrate. **NEXLER Connect Tape** should then be embedded into the fresh compound by pressing down with a dry tool and then immediately covered with another even layer of product. In order to achieve a permanent bond, the width of the first and second layer must be greater by min. 1 cm than the width of the **NEXLER Connect Tape** reinforcing tape used. The tape must be clean, dry and properly cut. Remove any voids or blisters during the process of embedding. Adjust the amount of the compound so that the tape is fully saturated. Then, once the compound has dried, the third layer can be applied. The application area should be defined in such a way that it is at least 4 cm wider on each side than the width of the **NEXLER Connect Tape** used.

Window fitting: When applying the third layer on a vertical element of window joinery, you can make the working area 0,8 - 1 cm wider than the previous layer area. When applying the third layer on a horizontal element, designate the working area so that its width is at least 4 cm greater than the width of the previous layer.

Roofing felt grit finish: Optionally, after the last layer has set, another layer of **NEXLER Connect** can be applied to finish the seal with NEXLER Bituminous Felt Sprinkle. Make the layer in which the sprinkle is to be embedded wider than the previous layer. The sprinkle should be embedded immediately after applying the product.

Protective and decorative finish: Optionally, after the last layer has set, it can be covered with NEXLER Izofol Roof or NEXLER Silver Protect. Before applying the product, the substrate must be clean and free of any substances that may reduce adhesion. NEXLER Izofol Roof should be applied after **NEXLER Connect** has fully set, no sooner than 3 days after applying the last layer. NEXLER Silver Protect can be applied 1 day after applying **NEXLER Connect**.

■ CONTROL OF PERFORMANCE

Thickness of a layer should be controlled by checking the material consumption on a dedicated surface.

Properly made coating after setting should be a uniform, clean coating, without flakes and other defects. The coating should adhere closely to the substrate. Make sure that the tape is thoroughly embedded (the tape must not be bent or rolled up).

TOOLS AND TOOL CLEANING

Low-speed mixer, roller, brush, putty knife.

Clean tools with organic solvents immediately after use (resin must be in an unbound state).

After the resin dries, clean tools mechanically.

STORAGE AND TRANSPORT

The shelf life of the product is 12 months from production date specified on the packaging. Store in dry and cool rooms, at temperature from 0°C to +25°C, in tightly sealed, original packaging. Protect the product from heat and exposure to direct sunlight. The product may be transported at temperatures below 0°C for no longer than 4 days.

NOTES

Works should be carried out in accordance with technical conditions, manufacturer's instructions, health and safety standards and regulations.

For information on how to deal with symptoms of disease, allergies or irritation of the skin or eyes, please refer to the Safety Data Sheet (www.nexler.com).

After works are finished, hand over the remaining content of the product and the container to authorised companies.

GENERAL RECOMMENDATIONS

Technical data and information on the method of use are given for a temperature of 23°C ± 2°C and a relative air humidity of 55%. In other conditions, the setting (drying) time may change significantly. The product consumption indicated in this sheet depends on the type and preparation capacity of the substrate.

Do not use the product for tar materials.

Do not use on bituminous felt surfaces covered with thermofusible film.

When using on the surfaces of plastic membranes, it is recommended to carry out an appropriate test.

The product should not be used on sensitive metal surfaces, e.g. copper and its alloys. May cause discolouration of the substrate.

SAFETY INFORMATION

Flammable liquid and vapour. Causes skin irritation. May cause an allergic skin reaction. Causes serious eye irritation. May cause damage to organs through prolonged or repeated exposure. If medical advice is needed, have product container or label at hand. Keep out of reach of children. Keep away from heat, hot surfaces, sparks, open flames and other ignition sources. No smoking. Wash hands and exposed parts of the body thoroughly after handling. Wear protective gloves/protective clothing/eye protection/face protection. Dispose of contents/container according to the instructions of the manufacturer or person authorized to dispose of waste.

IMPORTANT INFORMATION

Please refer to the detailed conditions of use of the product before use.

We guarantee the quality of our materials as part of our terms of sale and delivery. For buildings with special requirements that are not covered by this manual, we provide our Customers with our own professional advisory service.

The manufacturer has no influence on the improper use of the material, its use for other purposes or under conditions other than those described above. The guarantee only covers the quality of the delivered product. The correct and therefore effective use of the product is not subject to our control.

Neither the manufacturer nor his authorized representative may be held liable for any loss incurred as a result of improper use or storage of the product.

Employees of the company are authorized to provide technical information only and solely in accordance with this Technical Data Sheet. Information other than that contained in this sheet should be confirmed in writing.

If you have any doubts, consult the manufacturer.

CONTACT DETAILS

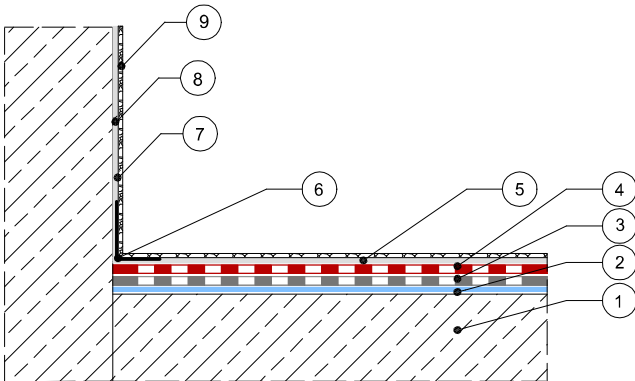
NEXLER sp. z o.o.
 Łużycka 6, 81-537 Gdynia, Poland
 tel.: +48 58 712 94 44
 www.nexler.com
 e-mail: dt@nexler.com

ISSUE DATE

This Technical Data Sheet was issued on 24.07.2025.
 Once we have issued a new Technical Data Sheet, this one is no longer valid.

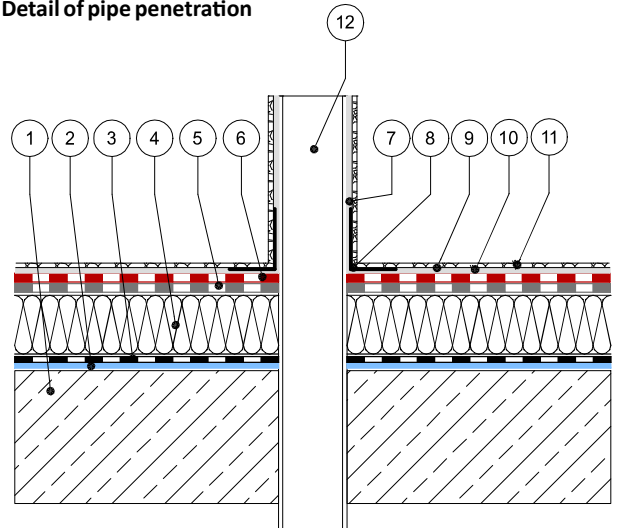
DETAILS

Detail of vertical-horizontal joint



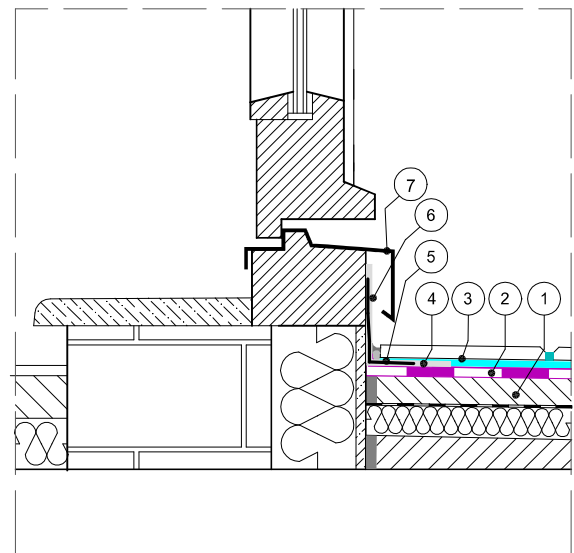
1. Concrete substrate
2. Bituminous primer NEXLER BITFLEX Primer
3. Weldable underlayer bituminous felt
4. Weldable top layer bituminous felt
5. First layer **NEXLER Connect**
6. NEXLER Connect Tape reinforcing non-woven fabric
7. Second layer **NEXLER Connect**
8. Third layer **NEXLER Connect**
9. Bituminous felt sprinkle embedded in the **NEXLER Connect** layer

Detail of pipe penetration



1. Concrete substrate
2. Bituminous primer NEXLER BITFLEX Primer
3. Vapour barrier made of weldable bituminous felt
4. Thermal insulation glued on with NEXLER Styropuk Roof adhesive
5. Weldable underlayer bituminous felt
6. Weldable top layer bituminous felt
7. First layer **NEXLER Connect**
8. NEXLER Connect Tape reinforcing non-woven fabric
9. Second layer **NEXLER Connect**
10. Third layer **NEXLER Connect**
11. Bituminous felt sprinkle embedded in the **NEXLER Connect** layer
12. PVC pipe

Detail of sealing the terrace and balcony door joint



1. Sloping (profiling) layer – NEXLER RENOBUD R 103 / R 105
2. Mineral waterproofing NEXLER AQUAMINERAL 2K Ultra
3. Adhesive mortar C2-S1
4. First layer **NEXLER Connect**
5. NEXLER Connect Tape reinforcing non-woven fabric
6. Second layer and third layer **NEXLER Connect**
7. Detail work